

# 125 Series\*

**LEGACY CONTROL**

125DV-C

The 125 Series is a cost effective drive that incorporates up-to-date design and engineering into a compact package. Installation and field adjustments are facilitated using a barrier type terminal strip and large, easily adjusted trimpots. Standard features include an inhibit circuit for start-stop operation and 1% speed regulation over a 50:1 speed range. Long life and quality are assured by 100% full load testing. The 125 Series is ideal for applications such as: office machinery, conveyors, packaging equipment, printers, conveyORIZED tunnels, process equipment, centrifuges, and exercise equipment.



**cUL<sup>®</sup> US** **CE** **cUL<sup>®</sup> US** **RoHS**

\*chassis models only

125DV200EW-29-4



125DV200EB-29-4



The NEMA 4X models were designed to directly replace many legacy models from Fincor, Dayton, Seco and others

\*The 125 Series has become a Legacy Control. A direct replacement will be the 150 Series.

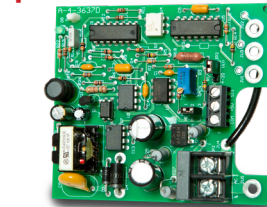


# 125 Series Features + Specifications

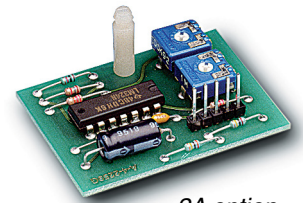
- Dual Voltage 120/240 VAC or 24/36 VAC, 50/60Hz
- ± 10% rated line voltage
- Adjustable horsepower settings
- Barrier terminal strip
- Full wave bridge supply
- 1% speed regulation
- Adjustable Minimum speed (0–30% of base)
- Adjustable Maximum speed (66–100% of base)
- Adjustable IR Compensation
- Adjustable Current Limit
- Adjustable Linear Acceleration & Deceleration (-2A)
- -10° to +45°C ambient temperature
- Line voltage compensation
- 5K ohm speed potentiometer kit included
- 50:1 speed range
- Overload capacity: 200% for one minute
- Transient voltage protection
- Voltage follower mode - isolated signal (0–10 VDC)
- Inhibit circuit—permits low power start & stop

Model	Width	Length	Depth	Weight
123D	3.63 in [9.22 cm]	4.25 in [10.76 cm]	1.30 in [3.30 cm]	12.5 oz [354 gm]
125D / 125DV-C	3.63 in [9.22 cm]	4.25 in [10.76 cm]	1.30 in [3.30 cm]	12.5 oz [354 gm]
125DV200E	5.00 in [12.70 cm]	9.50 in [42.10 cm]	5.50 in [14.10 cm]	64 oz [1.81 kg]

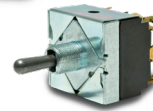
## Options:



-55H125 option



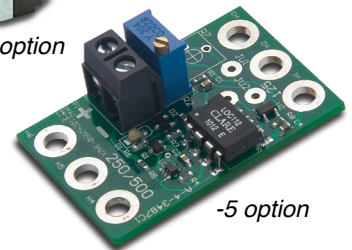
-2A option



-29B switch option



-HS heat sink option



-5 option

Base Model						Options											
Model	Supply Voltage	Motor Voltage	Current	HP	Body	-HS	-K	-L	-1	-2A	-4	-5	-7	-15B	-29	-55	-56
123D-C	24-36 VAC	24-36 VDC	5.5 ADC	N/A	C	N/A	N/A	N/A	N/A	✓	N/A	✓	✓	N/A	✓	N/A	N/A
125D-12C	120 VAC	90 VDC	1.2 ADC	1/50-1/8	C	✓	F	F	✓	✓	N/A	✓	✓	F	✓	✓	✓
	240 VAC	180 VDC		1/25-1/4													
125DV-C	120 VAC	90 VDC	5.5 ADC	1/8-1/2	C	✓	F	F	✓	✓	N/A	✓	✓	F	✓	✓	✓
	240 VAC	180 VDC		1/4-1													
125DV200EB [Black]	120 VAC	90 VDC	10 ADC	1/8-1	E	N/A	N/A	F	N/A	S	F	N/A	N/A	N/A	F	N/A	F
	240 VAC	180 VDC		1/4-2													
125DV200EW [White]	120 VAC	90 VDC	10 ADC	1/8-1	E	N/A	N/A	F	N/A	S	F	N/A	N/A	N/A	F	N/A	F
	240 VAC	180 VDC		1/4-2													

C – open chassis  
E – NEMA 4X enclosed

✓ - Option is available  
S - Standard Feature

N/A – Option Not available  
F – Option is available as Factory Installed only

## Option Description:

- HS: Auxiliary heat sink doubles stated current / HP rating
- K: Fixed Acceleration rate of 6 seconds
- L: UL Listed version (applies to 125DV-C chassis models only. All enclosed models are UL Listed)
- 1: Speed Pot Interlock - when AC power is applied, speed pot must be turned full CCW to start drive
- 2A: Adds linear ACCEL and DECEL adjustment. Already included in Enclosed models
- 4: Jog - momentary switch will jog motor at speed pot setting - enclosed models only
- 5: Isolated 4-20mA signal follower input - loop power NOT provided
- 7: Same as -5 option, with provision to add manual speed pot for Auto/Manual operation
- 15B: Fixed Acceleration rate of 4 seconds
- 29: 4PDT center block (no pass) switch motor reversing. Cuts off supply power while changing motor direction
- 55H125: Isolated 0-5 to 0-250VDC signal follower input
- 56H125: Same as -55H125, with provision to add manual speed pot for Auto/Manual operation